



Controll-A-Door®

DIAMOND PD – POWER DRIVE

Product Code
062704



Description:

The Controll-A-Door® Diamond PD - Power Drive features the latest technology for efficient, quiet and reliable operation.

**Controll-A-Door Diamond
PD - Power Drive**

**PART NO.
062704**

Contains

2 x 4 button keyring transmitter

Specifications:

Motor Specifications

Power Supply	230-240VAC
Transformer Voltage Prim	230-240VAC Sec: 24VAC
Standby Power Consumption	1.8W
Motor Type	Permanent magnet
Motor Voltage	24 VDC
Motor Power	100W
Motor Output Speed	70rpm
Travel Speed (mm/sec) Open/Close	140 / 130
Soft Start/Soft Stop	Yes
Manual Release	Integral motor/ clutch type pull/pull
Lockable Engage Disengage	No
Courtesy Light	Yes (variable)
Light Source	2 X LED modules (each with 3 LED's)

Door & Mounting Specifications

Maximum Door Travel Limit in Barrel Turns	3 ¹ / ₄ turns
Short Term Lifting Force	550N
Maximum Door Size (Area)	16.5m ²
Maximum Door Weight	100kg
Recommended Lateral Space Requirements	95mm
Minimum Lateral Space Requirements	40mm
Opener Weight	7.0kg
Weight Bar	2kg metal filled plastic bottle

Transmitter Specifications

Operating Frequency	UHF Multi frequency FM (Tri-Tran™ technology)
Transmitter Capacity	14
Receiver/Transmitter Type	UHF Multi frequency FM (Tri-Tran™ technology)

Warranty

Warranty (Years)	Full on-site 5 years / 10,000 cycles
------------------	---



An **alesco** Company



Features:

- Full on-site 5 year/10,000 cycle parts and labour warranty (if installed by an authorised B&D Dealer).
- “Scalloped” back for easier securing and mounting in tight installations.
- Only needs 40mm sideroom (curtain to inside of bracket) for installation.
- Compatible with PG-3 Programmer.
- LED Lighting - 30,000 hour half-life span with brighter illumination than traditional globes.
- 1.8W standby power usage.
- Soft start/soft stop operation.
- Vacation and pet modes.
- Battery backup and solar compatible.

Method of operation:

Activate the operator by either the door control button, outside key switch or keyless entry system, the remote control transmitter or manually open the door, by pulling the release handle down.

Lifting capacity:

More powerful motor - will readily lift up to a 16.5m² door (or 3¹/₄ turns of the drum).

Door type:

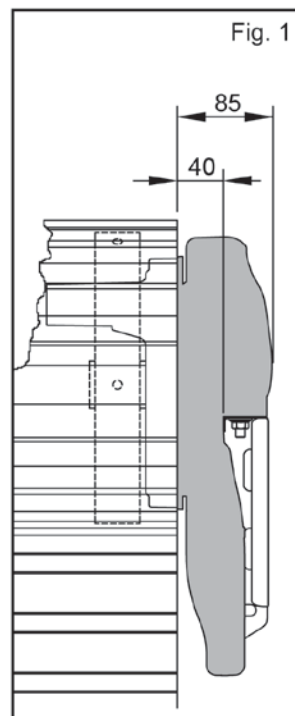
Standard residential rolling garage doors.

Installation requirements/ instructions:

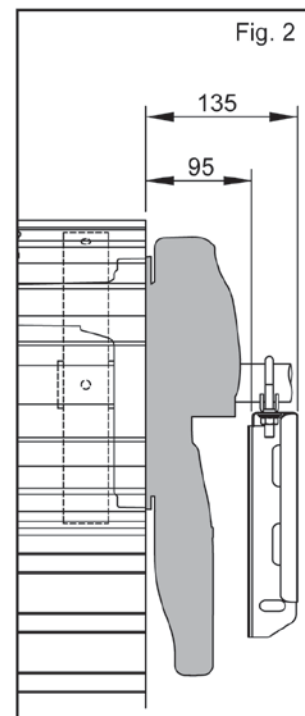
The door must be in good operating condition and the maximum effort to move the door up or down, from stationary, should not exceed 200 Newtons (20kg force) at the bottom rail. The recommended force should be 70N (7kg) for manual operation.

Figures 1 and 2 show the minimum and recommended sideroom that is required to mount the opener. The distance between the edge of the door curtain and the inside of the bracket must be at least 40mm with a total sideroom requirement of 85mm. However, for easier access it is recommended that at least 95mm is allowed for between the curtain and bracket and a total of 135mm from the edge of the curtain to the wall.

Note: Door Axle Diameter not to exceed 35mm.



*Minimum
Sideroom*



*Recommended
Sideroom*

The opener can be installed on either the right hand or left hand side of the door. The opener is set in the factory to Right Hand Side. This opener is not designed for external use. It must be mounted in a dry position that is protected from the weather. Moisture or corrosion may damage the opener and this is not covered by the Warranty. Do not allow water, or other liquids, to enter the opener or remote control transmitter.



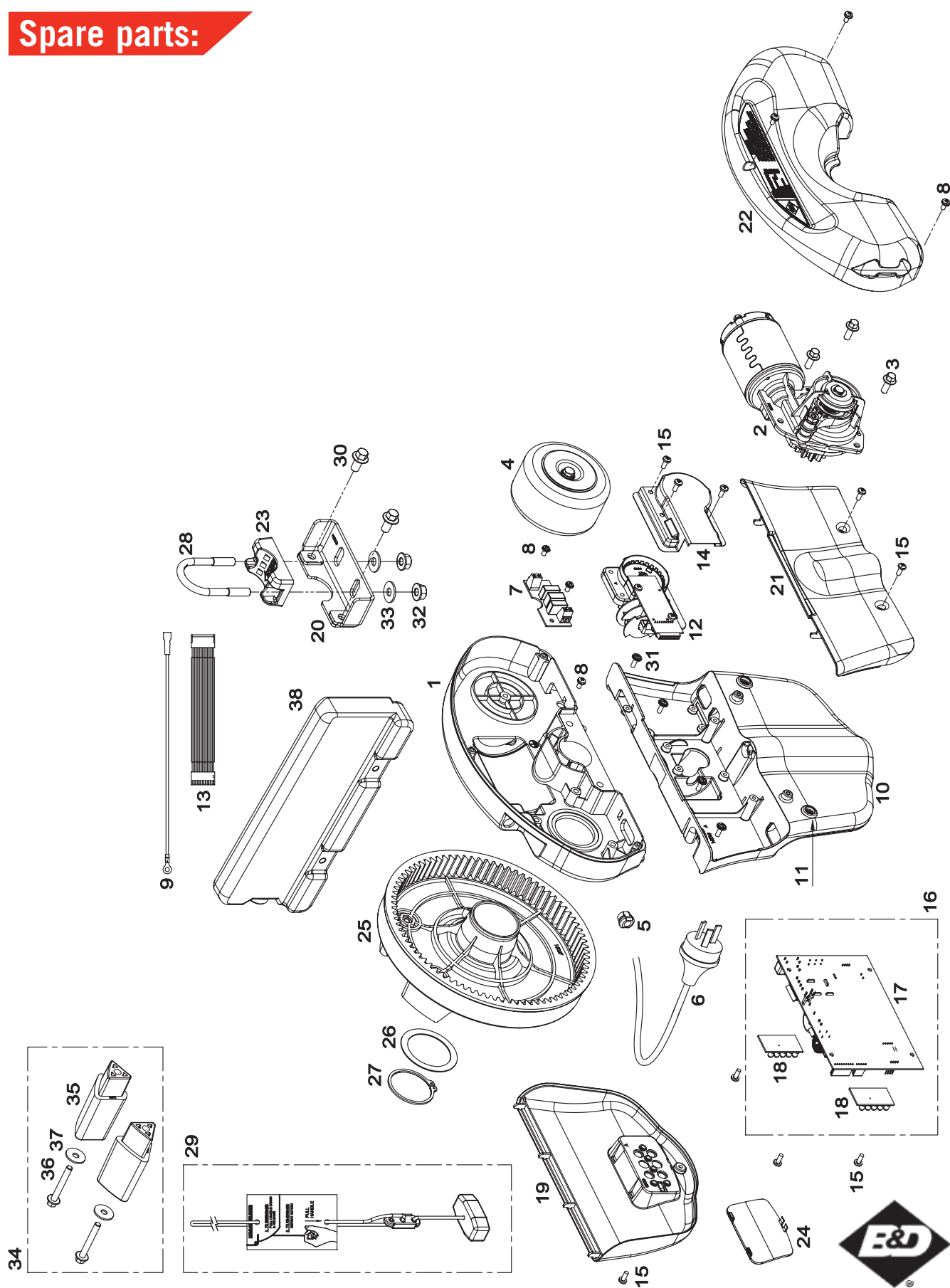


Controll-A-Door®

DIAMOND PD – POWER DRIVE

Product Code
062704

Spare parts:





Controll-A-Door®

DIAMOND PD – POWER DRIVE

Product Code
062704

Spare parts list:

ITEM NO.	PART NO.	DESCRIPTION
1		Drive Chassis VR1
2		Clutch Geared Motor Assy 13 WS
3		Hex Serration Head Screw M6x16
4		Transformer TDB-100-143 Kit
5		Cord Grip Grommet SB5P-2
6		Power Cord A.S 1.5m W2P+1R
7		EMC Filter Board EMC-2.01
8		Pan Head Screw W/Washer M4x8
9		Wire Earth Assy 250L
10		Support Chassis VR1
11		Grommet 101422
12		Timing Assy
13		Timing Harness Assy
14		Dust Cover Top
15		Taptite Screw 'P' M4x10
16		Control Board CBR-1 Assy
17		Control Board CBR-1 V-1.03
18		LED Light LL1-1.00
19		Light Diffuser VR1 Assy
20		Mounting Bracket VR1
21		Timing Cover VR1
22		Main Cover VR1 Assy
23		Industrial Saddle
24		Controls Cover VR1
25		Internal Gear 8225-40 Assy
26		Clamp Washer
27		Retaining Ring STW 45
28		U-Bolt M8
29		String Handle Assy
30		Hex Serration Head Screw M8x16
31		Pan Serration Head Screw M4x12
32		Hex Serration Flange Nut M8 (Black)
33		Flat Washer 8.4x18x1.6
34		Accessory Pack Internal Gear VR1
35		Extension Fork 58L
36		Hex Serration Head Screw M6x45
37		Flat Washer 107D 6.4x20.5x1.6
38		Weight Bar

